

Class 4e only (c.1287- c.1289)*Issued under John of Northwold 1279-1301 (Abbot)**and (Richard de Lothbury Monever) 3rd Nov 1287 - c16th May 1297)*

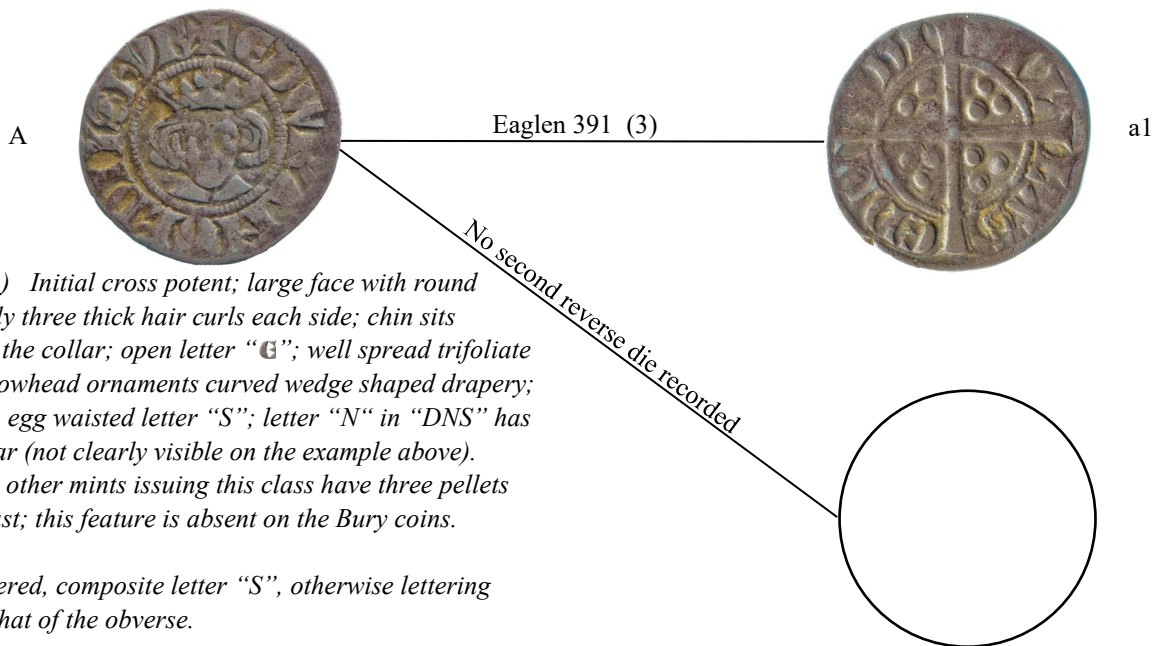
Earlier class 4 coins came under the Robert-de-Hadeleie (R.D.H.) section where the reverse inscription had the name of the moneyer only, with no mention of where the coins were minted. Class 4e (and all subsequent issues) fell in line with the other mints in having the name of the mint only on the reverse.

No coins of class 4d are recorded from this mint

Average weight of this sub class is 1.36g

Die charts

All numbers and letter references in the charts correspond to those published by Dr Eaglen in his 2014 publication “ The Abbey and Mint of Bury St. Edmunds from 1279”. The number in brackets on the linking lines is the number of coins so far recorded from these dies

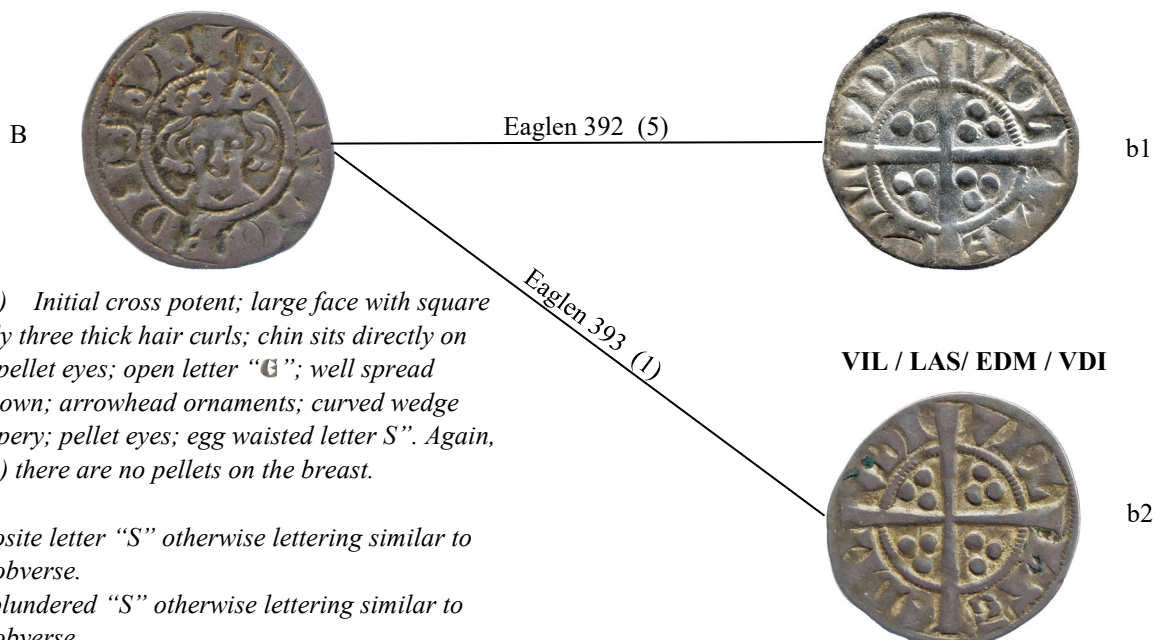
⚔EDW R' ANGL' DNS hYB**VIL / LAS/ EDM / VDI**

Obverse (A) Initial cross potent; large face with round chin; mainly three thick hair curls each side; chin sits directly on the collar; open letter “G”; well spread trifoliate crown; arrowhead ornaments curved wedge shaped drapery; pellet eyes; egg waisted letter “S”; letter “N” in “DNS” has a double bar (not clearly visible on the example above). Coins from other mints issuing this class have three pellets on the breast; this feature is absent on the Bury coins.

Reverses

(a1) Blundered, composite letter “S”, otherwise lettering similar to that of the obverse.

No second die recorded

⚔EDW R' ANGL' DNS hYB**VIL / LAS/ EDM / VDI**

Obverse (A) Initial cross potent; large face with square chin; mainly three thick hair curls; chin sits directly on the collar; pellet eyes; open letter “G”; well spread trifoliate crown; arrowhead ornaments; curved wedge shaped drapery; pellet eyes; egg waisted letter S”. Again, as in die (A) there are no pellets on the breast.

Reverses

(b1) Composite letter “S” otherwise lettering similar to that of the obverse.

b2) Badly blundered “S” otherwise lettering similar to that of the obverse.