

Class 12 (c1314)

(Roger de Rede as Moneyer) 17th May 1297 - c1319)

Class 12 differs from the other coins of Edward II in that the central ornament of the crown is not composed of the standard fleur-de-lis design that is normally associated with Edward II coins. This central ornament now consists of either leaf/diamond/heart shaped petals.



Leaf shaped petals to central fleur-de-lis of class 12a



Diamond shaped petals to central fleur-de-lis of class 12b



Heart shaped petals supported by fine stalks to central fleur-de-lis of class 12c; the same shape petals and supports are also seen on the jewels, and side fleurs. These features are not clearly seen on the majority of coins from this class, even those from the same obverse dies

The broken backed letter “E” makes its first appearance in 12c but is not seen in the early issues of class 13, suggesting some overlapping of the die production/design at this period.

The face punches are somewhat smaller than that seen on both the earlier class 11c and the later class 13.

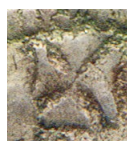


Early stage of the broken back to the letter “E” seen in 12c,

The first issue of class 12 (12a) has a thick initial cross. In class 12b this is replaced by a much thinner cross pattée of four wedges, this cross then continues to be used through class 13 and into the early issues of class 14.



Thick initial cross of 12a



Thin initial cross pattée of 12b, and 12c

Illustrations of the coins in the die charts show that both the side fleurs and the jewels of the crown in 12a, 12b, 12c show considerable variation to one another.

Bury St. Edmunds struck all three of the recorded sub classes, (12a, 12b, 12c), however only one die set (one obverse with two reverses) is recorded from each of these sub classes.

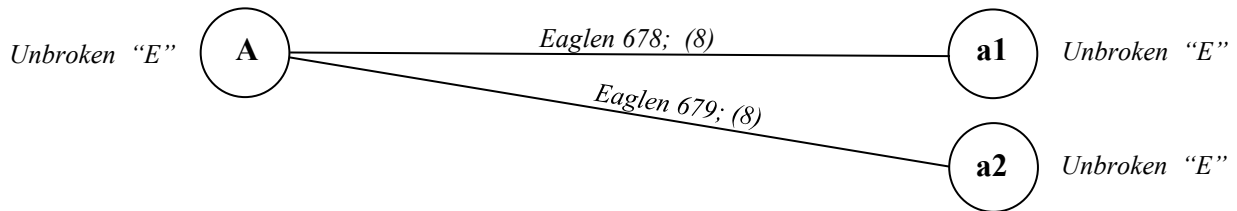
All obverse legends read EDWARRANGLDNSHyB

All reverse legends read VILL/SCIE/DMV/NDI

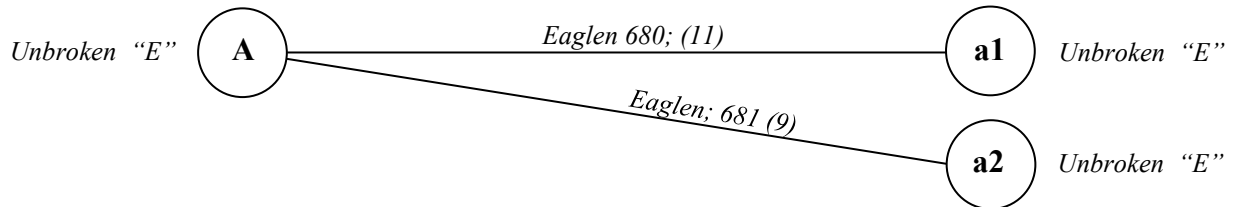
Class 12a, 12b, 12c die Layout

The number following "Eaglen" is a reference to the dies in Dr Eaglen's 2014 publication of the Bury Mint that covers the Edward series. The figures in brackets represent the number of coins currently recorded from these particular dies.

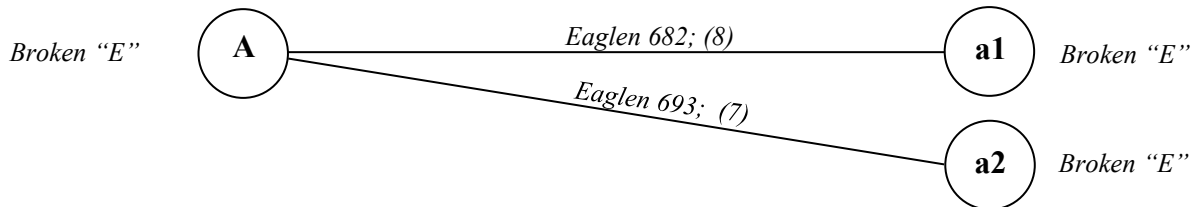
Class 12a



Class 12b



Class 12c



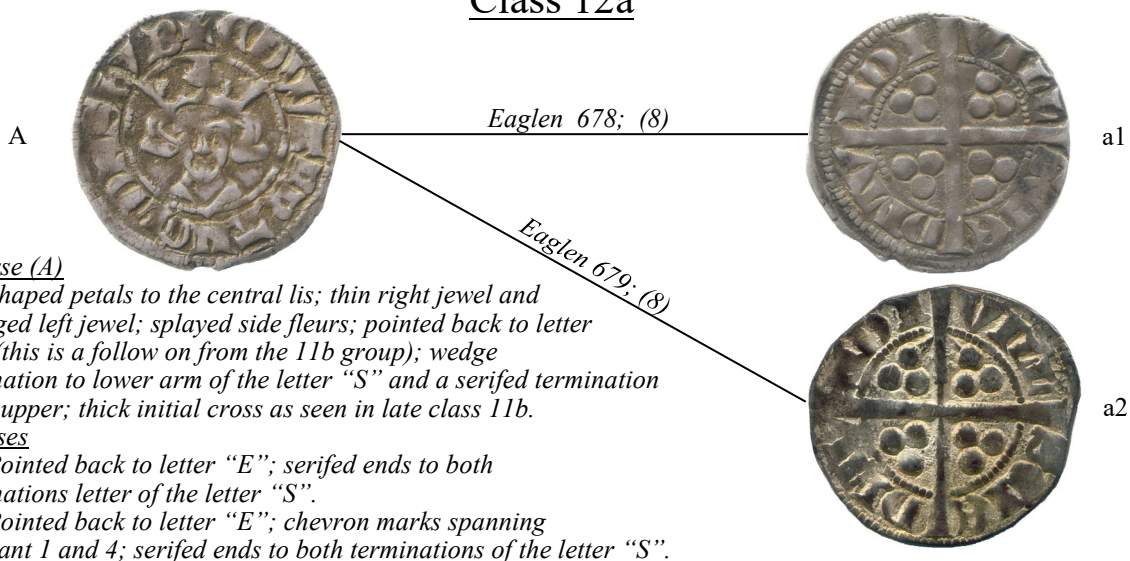
References

J. J. North; (date of issue c1314) *Sylloge of coins of the British isles 39*; *The J.J. North Collection, Edwardian English silver coins 1279-1351*; p27; Published for the British Academy by the Oxford University Press and Spink and Son 1989; ISBN 0-19-726075-6

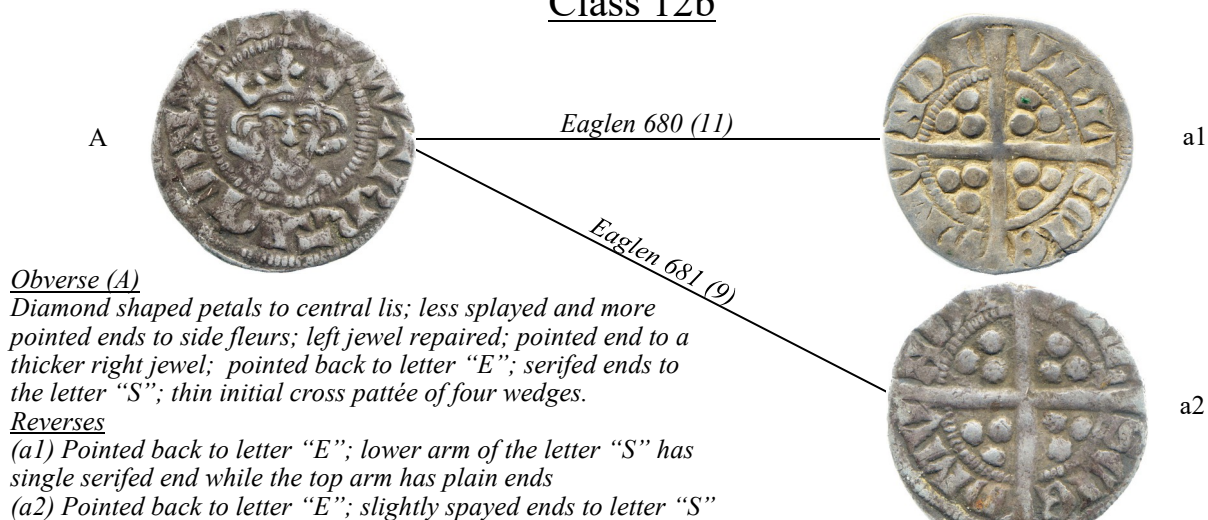
Dr R. J. Eaglen; *The Abbey and Mint of Bury St. Edmunds from 1279*; Published for The British Numismatic Society Special Publication No 11; Spink London 2014; ISBN 978-1-907427-37-4

Class 12a,12b,12c die chart

Class 12a



Class 12b



Class 12c

