

Edward II Class 13 (c1314-1317/18)

Overview

Class 13 coins were struck during the Abbacy of Richard of Draughton 1312-1335

*Moneys working at this period
(Roger de Rede 17th May 1297 - c1319)*

Class 13 is traditionally defined by the shape of the central fleur de lis, very reminiscent of a Greek battle axe having broad, flat-faced side petals.

The right-hand side fleur is damaged and shows signs of having being repaired. This is seen on all class 13 dies and can be an aid to identifying this class.

Jewels are short bent arrowheads with misshapen barbs. On one die the broken barbs have been repaired using a small round punch.



Broad flat-faced side petals to central fleur; straight sided left fleur; damaged right fleur; barbed jewels

The thin initial cross pattée of four wedges that was introduced in class 12b continues into this class.



Thin initial cross



The broken-backed “E” becomes firmly established in this class having made its first appearance in 12c. This broken letter is absent on the first die set of class 13 (Eaglen 684/685) and on the two reverses of the second set (Eaglen 686/687) indicating an overlap of die production between class 12c and 13. This broken letter continues to be used into class 14a then is gradually replaced during class 14, firstly with an open, then by a pointed back letter.



Unbroken letter “E”



Broken letter “E”

The majority of class 13 dies exhibit at least one long diagonal to the letter “N” and is similar to that found in 11b3, 11c and 12c.

The concave punch used to form the top bar of the letter “A” is also a continuation from earlier classes.

The straight sided upright used on some of the lettering seen in 11b2-12c evolves into one with concave uprights.

Single serified terminations to the letter “S” .



Single serified letter S

The pointed chin, that is seen in earlier classes, evolves into one with a more rounded style, this rounded style then continues into class 14.

Class 13 was in issue for approximately 3 years, during this time Bury was issued with 5 die sets (one set consisted of one obverse and two reverses).

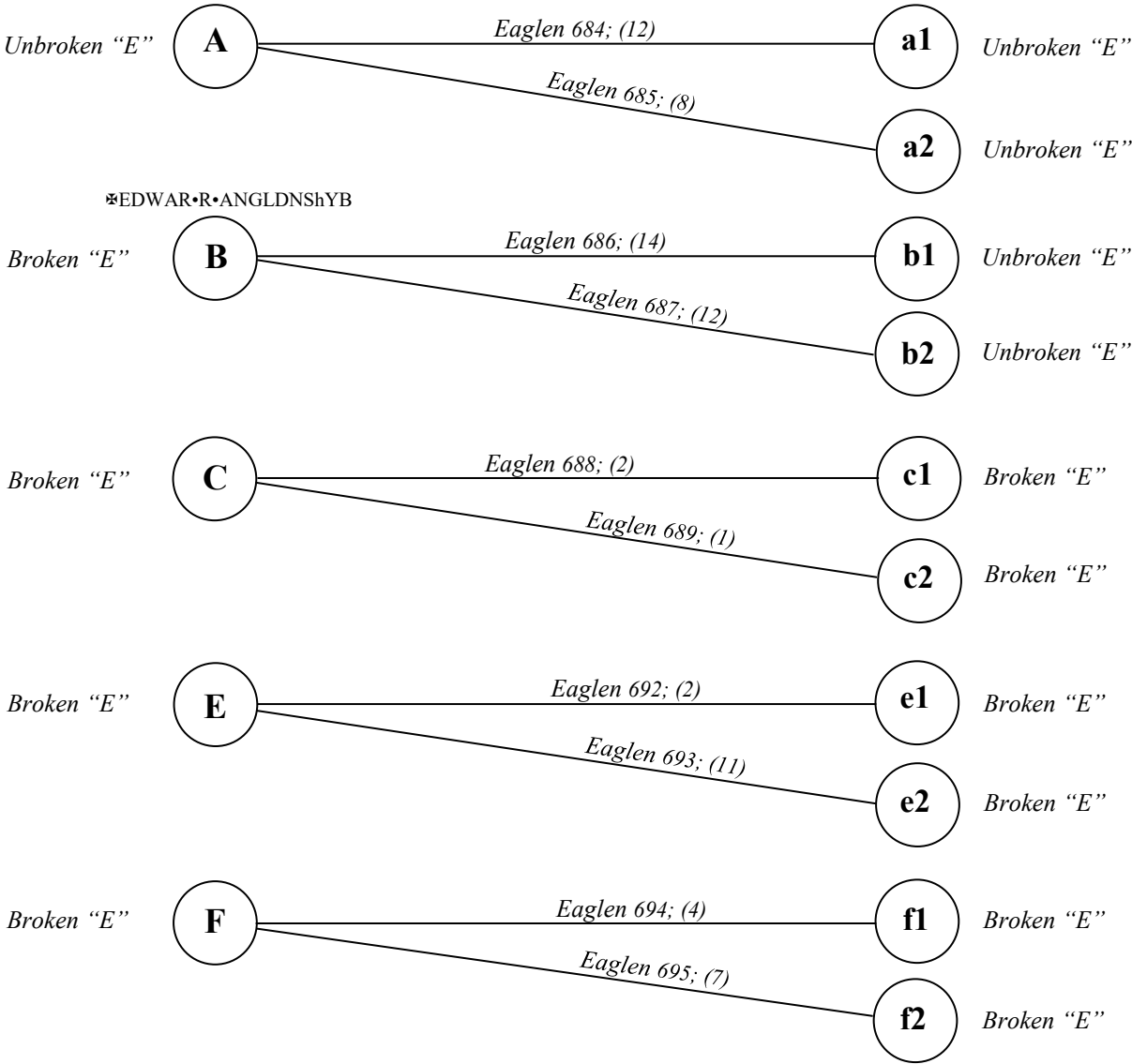
Class 13 die charts

Legends (unless amended in the chart)

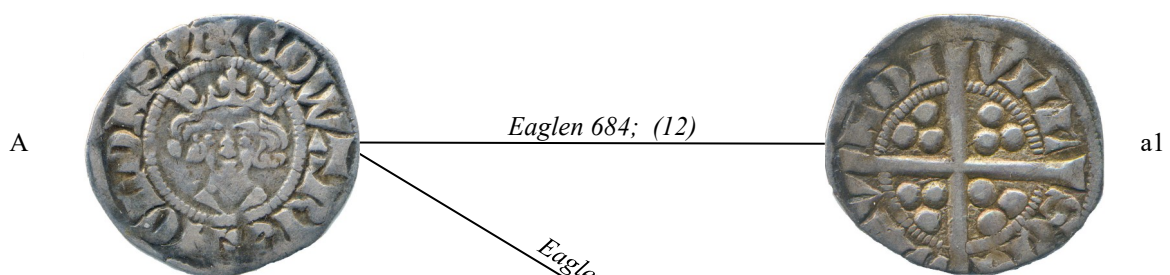
obv. ✠EDWARRANGLDNShYB rev. VILL/SCIE/DMV/NDI

*In class 13 Dr Eaglen's numbering and die lettering corresponds to his 2014 publication.
The figures in brackets represent the number of coins currently recorded from these
particular dies*

Eaglen dies (D-d1, D-d2); (G-g1, G-g2); (H-h1, H-h2); are of class 14a



Class 13 dies Links

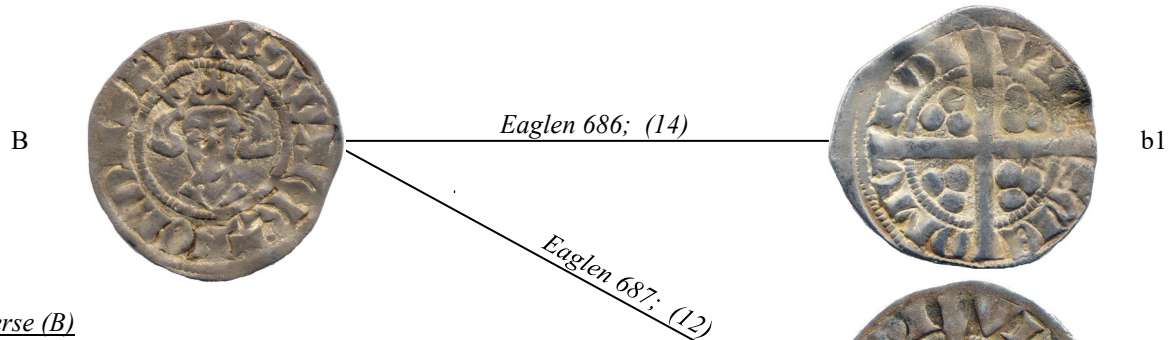


Obverse (A)

Unbroken "E"; wedge shaped over punch to right side fleur; left side fleur large oval shape; left hair punch broken at bottom; extended diagonals to letter "N"; straight sided letter "R" (with serifs); incurved rectangle top bar to letter "A"; letter "B" runs into initial cross.

Reverses

(a1) Unbroken letter "E"; poorly aligned lettering in "VILL"; overstruck letter "M" in "DMV"; Unbroken letter "E"
 (a2) Unbroken letter "E"; long die flaw below the left horizontal dividing bar; often encountered as being struck from rusted dies.

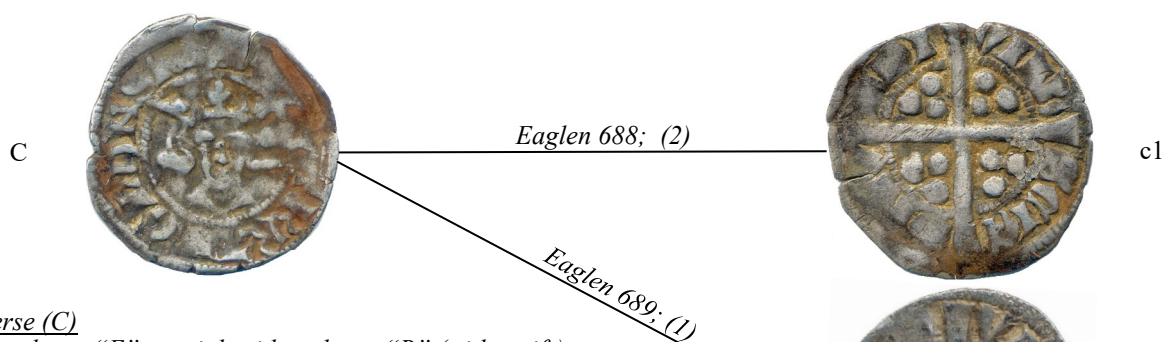


Obverse (B)

Broken letter "E"; broken right side fleur; incurved rectangle top bar to letter "A"; straight sided letter "R" (with serifs); extended cross bar to letter "N" well formed left side fleur; letter "B" runs into initial cross; stops after both letter Rs

Reverses

(b1) Unbroken letter "E"
 (b2) Unbroken letter "E"



Obverse (C)

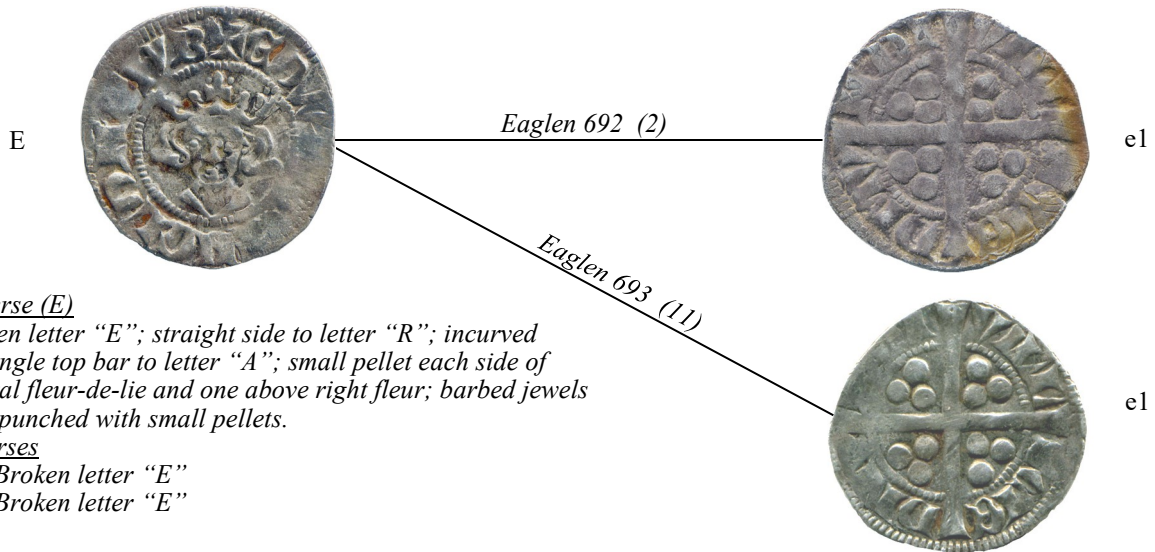
Broken letter "E"; straight side to letter "R" (with serifs); Incurved rectangle top bar to letter "A"; right fleur replaced?; initial cross not aligned with top of coin.

Reverses

(c1) Broken letter "E"
 (c2) Broken letter "E"

Note: All the recorded coins from these dies are either worn or badly struck making their positive classification to 13 in doubt. Further discoveries of coins from these dies could result in them being reclassified as 14a2

Class 13 dies Links



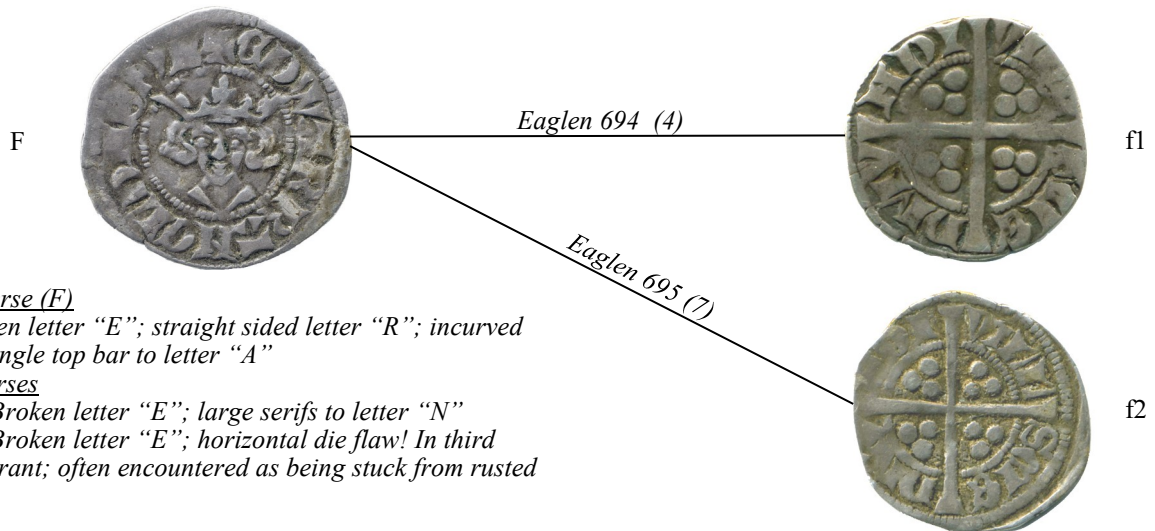
Obverse (E)

Broken letter "E"; straight side to letter "R"; incurved rectangle top bar to letter "A"; small pellet each side of central fleur-de-lie and one above right fleur; barbed jewels over punched with small pellets.

Reverses

(e1) Broken letter "E"

(e2) Broken letter "E"



Obverse (F)

Broken letter "E"; straight sided letter "R"; incurved rectangle top bar to letter "A"

Reverses

(f1) Broken letter "E"; large serifs to letter "N"

(f2) Broken letter "E"; horizontal die flaw! In third quadrant; often encountered as being stuck from rusted dies;

References

Dr R. J. Eaglen; *The Abbey and Mint of Bury St. Edmunds from 1279*; Published for The British Numismatic Society Special Publication No 11; Spink London 2014; ISBN 978-1-907427-37-4